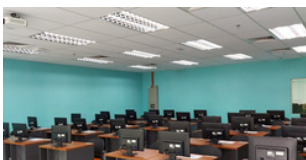


## OUR FACILITIES

### AUDITORIUM



### COMPUTER LAB



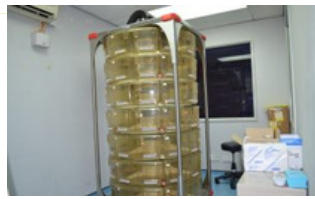
### GYMNASIUM



### LIBRARY



### LABORATORY



UNIVERSITI SAINS ISLAM MALAYSIA  
 جامعة العلوم الإسلامية الماليزية  
 ISLAMIC SCIENCE UNIVERSITY OF MALAYSIA

**USIM embraces a holistic approach towards the delivery of knowledge which reunites with revealed knowledge (Naqli) and acquired knowledge (Aqli)**

## Contact



Fakulti Perubatan dan Sains Kesihatan,  
 Universiti Sains Islam Malaysia (USIM),  
 Persiaran Ilmu, Putra Nilai,  
 71800. Nilai. Negeri Sembilan, Malaysia



+6(06)-758 0401 / +6(06)-798 5002  
 +6(06)-758 0404 (Fax)

## FACULTY OF MEDICINE AND HEALTH SCIENCES

Universiti Sains Islam Malaysia

<https://fpsk.usim.edu.my/>



Doctor of Philosophy  
(Medical Science) (PhDMedSc)

Programme code: K401

PROGRAMME OBJECTIVES

- a) To produce doctoral graduates who are adept and highly knowledgeable in specific fields of medical science .
- b) To produce doctoral graduates who are skilled in research and able to offer service and consultation in medical science fields effectively while observing and abiding by professional principles and ethics based on Islamic principles and ethics. .
- c) To produce doctoral graduates who are highly skilled in communication and technology and who are updated in their professional practice. .
- d) To allow doctoral graduates to explore and further their specialty to a higher level according to the latest needs and developments.

DURATION OF STUDY

Full Time: 6-10 semesters  
Part Time: 8-14 semesters

PROGRAM OPTION

By Research

ACCREDITATION

Malaysian Qualification Agency (MQA)

PROGRAM STRUCTURE

- 1. Research Methodology
- 2. Data Analysis
- 3. Arabic language

6 or more semesters of supervised research leading to a doctoral thesis in medical science

TUITION FEES

STUDENTS/ DURATION	3 YEARS	4 YEARS	5 YEARS
LOCAL	RM 20,462.00 (FT)	RM 26,036.00 (FT) RM 21,356.00 (PT)	RM 25,810.00 (PT)
INTERNATIONAL	RM 38,390.00	RM 48,940.00	-

PT: Part time, FT: Full time

Master of Medical Science(MMedSc)

Programme code: K301

PROGRAMME OBJECTIVES

- aa) To produce postgraduates who are adept and highly knowledgeable in specific fields of medical science .
- b) To produce postgraduates who are skilled in research and able to offer service and consultation in medical science fields effectively while observing and abiding by professional principles and ethics based on Islamic principles and ethics .
- c) To produce postgraduates who are highly skilled in communication and technology and who are updated in their professional practice .
- d) To allow postgraduates to explore and further their specialty to a higher level according to the latest needs and developments

DURATION OF STUDY

Full Time: 3-6 semesters  
Part Time: 5-8 semesters

PROGRAM OPTION

Mixed-Mode

ACCREDITATION

Malaysian Qualification Agency (MQA)

PROGRAM STRUCTURE COURSES  
(50 CREDIT HOURS)

- 1. Research Methodology
- 2. Data Analysis
- 3. Research Ethics
- 4. Advanced Scientific Procedures and Laboratory Skills
- 5. Thesis I, II and III
- 6. Philosophy of Islamic Science
- 7. Arabic language

2 or more semesters of supervised research leading to a dissertation in medical science.

TUITION FEES

STUDENTS/ DURATION	2 YEARS	3 YEARS	4 YEARS
LOCAL	RM 12,888.00 (FT)	RM 13,102.00 (PT)	RM 13,556.00 (PT)
INTERNATIONAL	RM 22,840.00	-	-

PT: Part time, FT: Full time

ADMISSION REQUIREMENTS  
(PhDMedSc)

- 1. A Master’s degree in the field or related fields accepted by the Senate; or
- 2. Other relevant qualifications equivalent to a Master’s degree AND with relevant professional experience recognised by the Senate; or
- 3. Candidates without a related qualification in the field/s or working experience in the relevant fields must undergo appropriate prerequisite courses determined by the Faculty.
- 4. Incumbent Master’s degree Student who has fulfilled the requirement of Regulations 8.0 and is approved by the Senate to convert his/her study to a Ph.D. degree; or
- 5. A Bachelor’s degree with the following conditions:
  - i. a bachelor's degree in the field or related fields with first-class (CGPA of 3.67 or higher) or its equivalent from an academic or Technical and Vocational Education and Training (TVET) programme;
  - ii. undergo internal assessment; and
  - iii. any other requirements of the JKPSU.

ADMISSION REQUIREMENTS  
(MMedSc)

- 1. A bachelor’s degree in the field or related fields with a minimum CGPA of 2.75/4.00 or equivalent, as accepted by the Senate; or
- 2. A bachelor’s degree in the field or related fields or equivalent with a minimum CGPA of 2.50/4.00 and not meeting CGPA of 2.75/4.00, can be accepted subject to rigorous internal assessment.
- 3. A bachelor’s degree in the field or related fields or equivalent with minimum CGPA of 2.00/4.00 and not meeting CGPA of 2.50/4.00, can be accepted subject to a minimum of 5 years working experience in the relevant field and rigorous internal assessment; or
- 4. Candidates without a related qualification in the field/s or working experience in the relevant fields must undergo appropriate prerequisite courses determined by the University and meet the minimum CGPA based on (1) to (3) above.
- 5. Other qualifications equivalent to a bachelor’s degree with honours AND relevant professional work experience.



Applicants can apply via online at  
<https://icgs.usim.edu.my/>